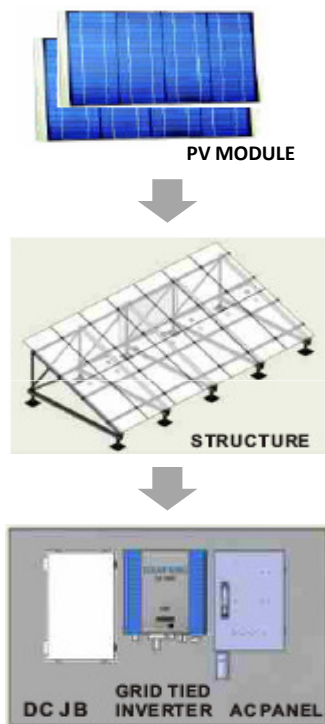
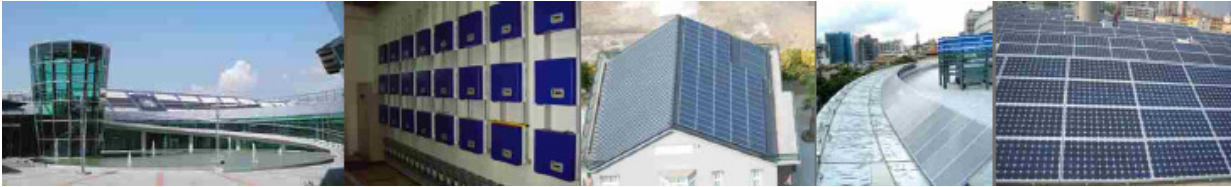


GT-POWER KIT



GT-POWER KIT

GT-POWER KIT - system is designed for small application and can be parallel-connected for bigger capacity. With the superior electric power conversion efficiency, GT-POWER system's compact design conforms to the environmental protection concept and energy conservation demand .



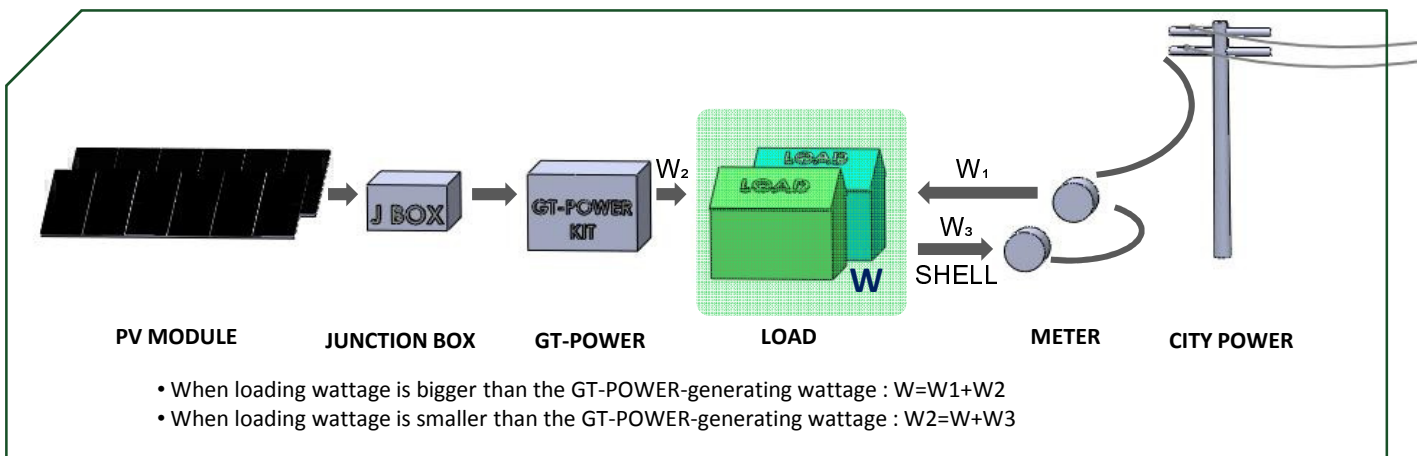
GT-POWER KIT - Maximum Power Point Tracking system (MPPT) function can transform the solar direct current (DC) to the alternating current(AC) at highest efficiency .

GT-POWER KIT - GT-POWER system equipped with protection mechanism of the anti-surge protection and reverse current resistant at the PV arrays side and AC high/under disconnect function which meets the UL1741 regulation.

GT-POWER KIT - All components of GT-POWER system carry with international certifications which is quality designed and assembled in Taiwan majorly.

GT-POWER KIT - With basic electricity licensed skill, assembler can install the GT-POWER system in short time while following the clear wiring instruction.

GT-POWER KIT - Various optional add-on devices make the users to be monitoring the performance and efficiency of system function .



GT- POWER KIT



GT-POWER KIT

Model No.	GT-10500	GT-11000
PV MODULE NO	LPS-2183S poly 220w	LPS-218-3S poly 230w
MODULE EFF. (%)	13.4%	14.1%
PV (W)	10560W	11040W
S x P	8Sx6P	8Sx6P
Quality Certificate	IEC16215	IEC16215
DC JB NO	KD-6D	
Number of circuit loops	6 Port	
Schottky Diode	YES	
Fuse	10 A×6	
DC isolation switch	2P / 600 VDC	
DC lightning arrester	YES	
IP rating of outer box	IP65	
INVERTER	SLK-4000	
Rated output Power	4000W×3	
AC Voltage Output Range	198~256 VAC	
AC frequency range	50/60hz Auto Selection	
Max. PV Output wattage	5000W×3	
DC Voltage Input range	150~500VDC	
Power Consumption in Standby mode	< 0.3 W	
Input/Output protection	OV / OC /OF	
Max. Efficiency (European)	95%	
IP rating of outer box	IP65	
Quality Certificate	UL/VDE/ITALY DK5940/SPAIN RD1663/CE	
Operation temperature	-25℃ ~+55℃	
AC PANEL	KA-232	
Protective Switch	MCB 2P/20A	
AC lightning arrester	x1	
Mechanical voltage meter	1ψ230V/30A	
IP rating of outer box	IP65	
(Option) PV Panel Frame System	MS-10K	
Material	Aluminum alloy T5 ; Stainless Steel Screws	
Wind Resistance coefficient (Azimuth angle ≤ 25°)	49 m/s (110mph)	
Bracket Set	Standard Installation	
Customer-made angle of PV array	15° ~ 50°	

GT-POWER KIT



GT-POWER KIT

Our installation references:

More than 200 sets had been installed at 1KW~200W during year 2000 to 2008.



Model No. 、 Shipping Size 、 Weight and 20' & 40' Container

Model No.	Net Weight (kg)	Gross Weight (kg)	Shipping Size (mm)	20' Container (set)	40' Container (set)
GT-10500				3	7
GT-11000				3	7

Our Missions

Our mission is to provide global customers the CORRECT using of the PV products! With the global climates database and professional analysis, King Enertech understand the suitable products in every customers location and through optimizing the system design and control technology to ensure King Enertech's product running efficiently through the world.

King Enertech System Corp.
 www.kingenertech.com
 Tel : 886-6-5053053 Fax: 886-6-5055985
 Lat N23°05'52" Lon E120°17'02"

Distributed By:

